

Frameless Full Access Cabinet Assembly & Installation Guide



CabinetNow



cabinetnow.com

Table of Contents

Jump to each section

04 **Assembly Instructions**

04 **Prepare Cabinet Sides**

05 **Install Slides & Hinges (if applicable)**

06 **Assemble Cabinet Carcass**

07 **Shelves, Doors & Drawers**

08 **Assembly Videos**

08 **DIY Labor Savings**

09 **Cabinet Assembly Checklist**

10 **Cabinet Installation Before You Begin**

10 **Tools & Materials**

10 **Layout & Reference Lines**

11 | Establish Upper Cabinet Height

11 | Establish Base & Vanity Cabinet Height

11 **Tall Cabinet Installation**

12 **Wall Cabinet Installation**

12 | Wall Cabinet Fastening

12 | Installing Additional Wall Cabinets

13 | Securing Cabinets Together

13 | Applied Ends, Fillers & Trim





Table of Contents

13 Base & Vanity Cabinet Installation

- 13 | Utility Prep
- 14 | Setting Base Cabinets
- 14 | Leveling & Aligning Cabinets
- 15 | Securing Cabinets to Wall
- 15 | Fillers & Toe Kick Installation
- 15 | Reinstall Shelves & Prepare for Final Adjustments

16 Cabinet Installation Checklist

19 Blum Tandem plus Blumotion Undermount Drawer Slides Installation

23 How To Install New Drawer Fronts

26 How To Install New Cabinet Doors

27 How To Measure Your Kitchen

29 How To Measure For New Cabinet Doors

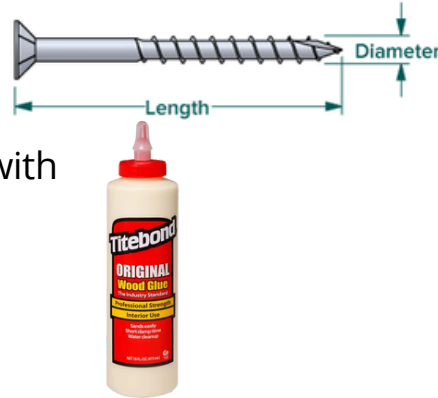
32 How to Measure for Drawer Boxes

33 | Drawer Glide Compatibility Chart

Assembly Instructions

Hardware & Tools

- Square drive bit
- **#8 x 1-1/2" Square Flat Head Wood Screws with Nibs**
- (Type 17, zinc-plated steel — included with shipment)
- Wood glue (recommended)
- System screws (for slides & hinges— included with shipment)



Step 1: Prepare Cabinet Sides

1. Identify the **left and right cabinet sides**.
2. Lay panels flat on a protected surface with **pre-drilled holes facing outward**.
3. Dry-fit components to confirm orientation before fastening.



Step 2: Install Drawer Slide Hardware

(Before carcass assembly- if applicable)

1. Position drawer slides at the pre-drilled system holes.
2. Secure slides using **system screws**.
3. Install screws at both the **front and rear** of each slide.
4. Confirm slides are level and parallel.



Soft close, full extension guides sold in pairs, 8 screws per pair. Refer to [Blum Tandem Plus Blumotion Installation Guide](#) for precise details.

Step 3: Install Hinge Plates

(Before carcass assembly- if applicable)

1. Align hinge plates with pre-drilled system holes.
2. Attach hinge plates using **system screws**.
3. Tighten securely without overtightening.

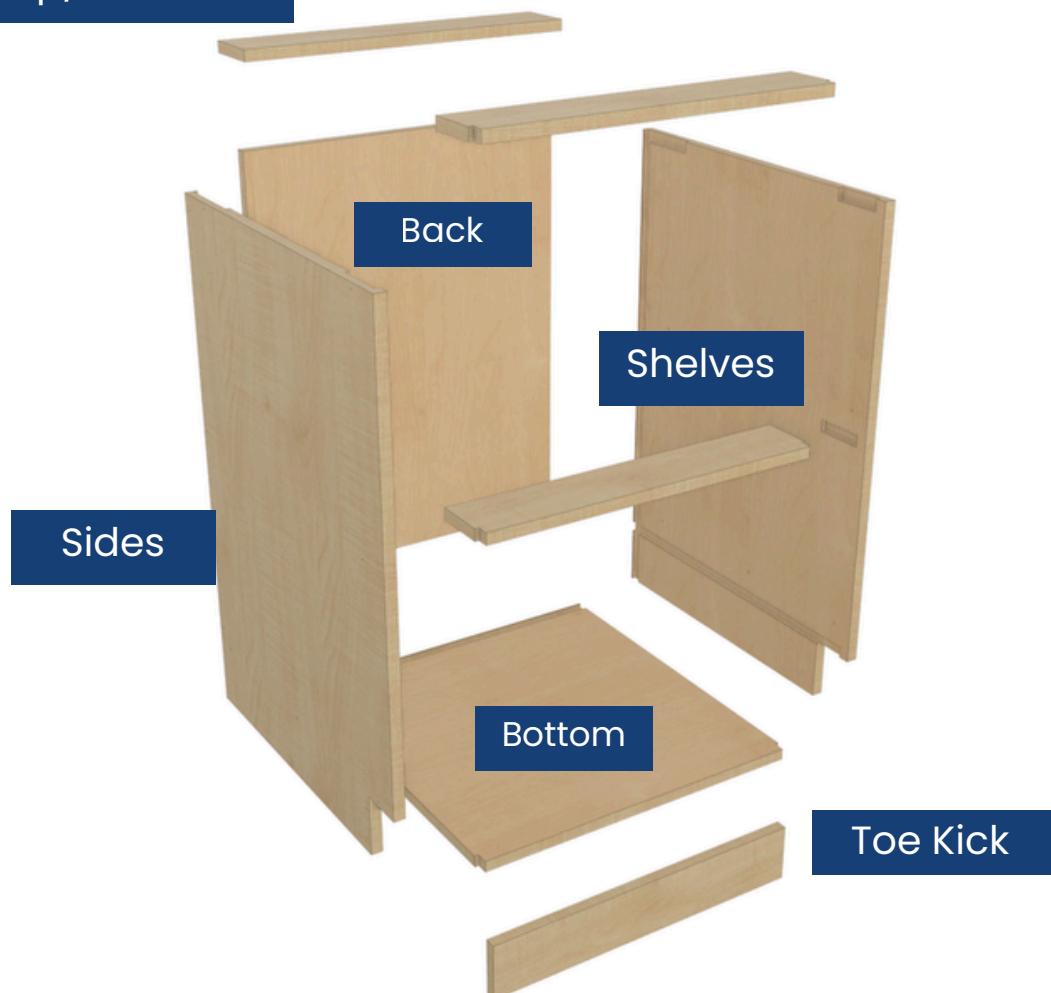


Step 4: Assemble the Cabinet Carcass

(Glue + Screws)

1. Apply a **thin bead of wood glue** to mating edges of cabinet parts and fasten sides with **#8 x 1-1/2" square flat head wood screws**.
2. Stand cabinet sides upright.
3. Position the **bottom panel** between cabinet sides.
4. Install the **top, fixed shelves, stretchers, and toe kick panel as shown in drawings**.
5. Fasten components through pre-drilled holes using:
 - a. **#8 x 1-1/2" square flat head wood screws, as supplied**
6. Drive screws flush—do not over-countersink.

Top/Stretchers



Step 5: Square & Secure the Carcass

1. Measure **diagonally from corner to corner**.
2. Adjust cabinet until both diagonal measurements match.
3. Fully tighten all fasteners once the **cabinet is square**.
4. Allow glue to **set** before moving the cabinet.

Step 6: Install Adjustable Shelves

(After Carcass Assembly)

1. Insert adjustable shelf **5mm clips** into desired hole locations.
2. Ensure clips are set evenly on all sides.
3. Place shelf onto clips and confirm it sits flat.



Step 7: Doors & Drawer Boxes

- Clip doors onto hinge plates once cabinets are installed.
- Slide drawer boxes into cabinet openings after installation and leveling.
- Final door and drawer adjustments are completed during installation.

Carcass Assembly Complete

- Cabinet box is square and rigid
- All structural joints are glued and fastened
- Cabinet is **ready for installation**



Assembly Video Tutorials

- [Upper Cabinet Box Assembly](#)
- [How to Build a Pantry Cabinet](#)
- [How to Build a Vanity Cabinet](#)
- [How to Build a Single Drawer Base Cabinet](#)
- [How to Build a Corner Base Cabinet](#)
- [How to Install Drawer Slides](#)* We commonly reference this guide to customers for installing drawer slides properly
- [How to Assemble Base Cabinet Box Blog](#)

View all of our assembly videos [here](#).



Assembling face frame cabinets can save you up to **70% of labor costs** with **ready-to-assemble (RTA) cabinets**.

Kitchen Size	Avg Cabinet Cost	Avg Labor Rate	Install Time	Potential DIY Labor Savings
Small Kitchen (7×10)	\$3,400	\$70-\$200/hr	8-10 hrs	\$560-\$2,000
Standard Kitchen (10×10)	\$12,400	\$70-\$200/hr	16-20 hrs	\$1,120-\$4,000
Large Kitchen (20×20)	\$21,800	\$70-\$200/hr	20-24 hrs	\$1,400-\$4,800

	Traditional On-Site Build	CabinetNow Ready-to-Install Boxes
Total Installation Time	41.5 hours	10 hours
Labor Cost (est. @ \$55/hr)	\$2,510.75	\$550.00
Cabinet Material Cost	\$919.77	\$2,140.63
Total Installed Cost	\$3,430.52	\$2,690.63
Net Savings	—	\$739.89
Time Reclaimed	—	31.5 hours

CabinetNow Cabinet Assembly Checklist

BEFORE ASSEMBLY

- ☐ Cabinet parts and hardware accounted for
- ☐ Correct cabinet identified
- ☐ Work surface protected
- ☐ Wood glue ready

PREP & HARDWARE

- ☐ Left/right cabinet sides identified
- ☐ Pre-drilled holes facing inward
- ☐ Drawer slides installed (if applicable)
- ☐ Hinge plates installed (if applicable)

CARCASS ASSEMBLY

- ☐ Glue applied to all mating edges
- ☐ Bottom panel installed
- ☐ Top/deck installed
- ☐ Fixed shelves, stretchers & toe kick installed
- ☐ Screws driven flush (not over-countersunk)
- ☐ Excess glue wiped clean

SQUARE & FINISH

- ☐ Cabinet checked diagonally and squared
- ☐ All fasteners fully tightened
- ☐ Shelves installed (if applicable)
- ☐ Cabinet ready for installation

Installation Before You Begin

- Verify all cabinets match approved drawings.
- Confirm room dimensions and finished floor height.
- Locate studs and identify electrical, plumbing, and mechanical locations.
- Remove doors and adjustable shelves as needed for installation.

Tools & Materials

- 6' level or laser level
- Dead blow mallet
- Long Phillips and flathead screwdrivers
- Drill and impact driver
- Clamps (quick clamps recommended)
- Toggler toggle bolts
- PowerHead screws (1-1/4", 2-1/2", 3")
- Hole saw kit (carbide-tipped recommended)

Layout & Reference Lines

ESTABLISH UPPER CABINET HEIGHT

1. Using a **6' level or laser**, locate the **highest point of the floor**.
2. From that point, measure up to the total cabinet height
3. (example: 2414mm / 95") and mark.
4. Extend a **level line around the room** at this height wherever upper cabinets will be installed.
5. Measure **56-60mm (2 3/16"-2 3/8") down** and mark a second reference line.
6. Using approved drawings, mark all **vertical cabinet locations** on the wall.

ESTABLISH BASE & VANITY CABINET HEIGHT

1. Starting at the highest point of the floor, measure up to base cabinet height (*example: 878mm / 34 9/16"*) and mark a level line.
2. Transfer all vertical cabinet locations from drawings onto the wall.

Toe Kick Clearance

- Standard toe height: **4"**
- Confirm finished height accommodates toe space before proceeding.

Tall Cabinet Installation

1. Set tall cabinets in position.
2. Align cabinet tops with the **upper cabinet height reference line**.
3. Shim behind the cabinet as needed to bring it **level and plumb**.
4. Fasten the cabinet to wall studs through the cabinet back using **recommended 3" round washer head installation screws**.
5. Tighten screws until snug while maintaining level—**do not overtighten**.
6. Attach any applied ends.



Important Notes

- Always fasten tall cabinets into studs.
- Do not cover electrical boxes or wiring.
- Avoid screw placement that may penetrate finished raised-panel applied ends.

Wall Cabinet Installation

WALL CABINET FASTENING

1. Starting at a corner or fixed reference point, lift the wall cabinet into position.
2. Align the **top of the cabinet** with the upper cabinet reference line.
3. Shim behind the cabinet as needed to bring it **level and plumb**.
4. Fasten the cabinet directly into wall studs through the cabinet back using **3" round washer head installation screws**.
5. Tighten screws until snug while maintaining level—**do not overtighten**.



Fastener Used

- **#8 x 3" combo drive (SQ/PH)**
- Round washer head
- Type 17, zinc-plated steel

INSTALLING ADDITIONAL WALL CABINETS

1. Set adjacent wall cabinets.
2. Shim as needed to maintain alignment.
3. Clamp cabinets together.
4. Fasten cabinets to each other through cabinet sides using **1-1/4" screws**.
5. Recheck level and plumb across the full run.

IMPORTANT NOTES

- Always fasten wall cabinets into **studs**.
- Do not rely on drywall anchors for cabinet support.
- Avoid screw placement that may penetrate finished applied ends.
- Ensure electrical boxes and wiring remain accessible.

SECURING CABINETS TOGETHER

1. Clamp adjacent cabinets together.
2. Fasten cabinets using **1-1/4" screws** through cabinet sides.

APPLIED ENDS, FILLERS & TRIM

1. Attach finished applied ends using **1-1/4" screws**.
2. Install fillers using **1-1/2" self-tapping screws**.
 - a. Standard wall filler: **38mm / 1 1/2"**

Caution:

Raised-panel applied ends are thinner at profiles. Avoid over-penetration.

Base & Vanity Cabinet Installation

UTILITY PREP

1. Measure and transfer all electrical, plumbing, and mechanical locations.
2. Confirm cabinet openings and utility locations before making any field modifications.
3. Make minor field adjustments only if required.

Tool Recommendation:

Carbide-tipped hole saw kits provide cleaner, more accurate cuts.



SETTING BASE CABINETS

1. Start at a **corner or fixed reference point** and work outward.
2. Set the first cabinet in place, positioning it tight to the wall.
3. Shim under cabinet bases as needed to bring the cabinet **level side-to-side and front-to-back**.
4. Confirm cabinet top aligns with the **base cabinet level reference line**.

Tip: Establishing the first cabinet perfectly level is critical for the rest of the run.

LEVELING & ALIGNING CABINETS

1. Continue setting adjacent cabinets.
2. Shim each cabinet to maintain consistent height and level across the run.
3. Check plumb at the cabinet face.
4. Clamp cabinets together using quick clamps.
5. Fasten cabinets together through cabinet sides using **1-1/4" screws**.

Important Notes

- Ensure shims remain tight and fully support cabinet sides and load points.
- Cabinets must sit flat with no rocking before fastening.

SECURING CABINETS TO WALL

1. Fasten cabinets through the $\frac{3}{4}$ " thick cabinet back at each stud using **3" round washer head installation screws**.
2. Tighten screws until snug while maintaining level and plumb.
3. Shim within the **10mm back scribe area** if needed to maintain alignment.

FILLERS & TOE KICK INSTALLATION

1. Install fillers using **1-1/4" self-tapping screws**.
 - a. Standard wall filler: **38mm / 1 1/2"**
2. Cut toe kick material to length and miter outside corners.
3. Dry-fit toe kick to confirm alignment.
4. Secure toe kick material using finish nails, adhesive, or approved fastening method.

Optional

- Glue and pin mitered corners using 1" 23-gauge brad nails for a seamless finish.

REINSTALL SHELVES & PREPARE FOR FINAL ADJUSTMENTS

1. Reinstall any adjustable shelves removed during installation.
2. Confirm cabinet boxes are secure, level, and flush.
3. Proceed to **Final Adjustments & Completion**.

Final Adjustments & Completion

1. Reinstall adjustable shelves.
2. Reinstall drawers first, then doors.
3. Adjust all doors and drawers to **3mm / 1/8" reveal**.
4. Install hinge cover caps.
5. Confirm bumper pads are installed.
6. Verify doors align evenly and contact cabinet face at top and bottom.

CabinetNow Cabinet Installation Checklist

BEFORE INSTALLATION

- ☐ Review approved drawings and cabinet layout
- ☐ Verify cabinet sizes, finishes, and quantities
- ☐ Confirm finished floor height
- ☐ Locate and mark wall studs
- ☐ Identify all electrical, plumbing, and mechanical locations
- ☐ Remove doors, drawers, and adjustable shelves as needed
- ☐ Confirm walls and floors are within acceptable tolerance

LAYOUT & REFERENCE LINES

- ☐ Highest point of floor identified
- ☐ Upper cabinet height marked and leveled
- ☐ Secondary reference line marked (for hanging rail or alignment)
- ☐ Base cabinet height reference line marked
- ☐ Vertical cabinet locations transferred from drawings

CABINET SETTING & LEVELING

- Cabinets set starting from a corner or fixed reference point
- Cabinets are level side-to-side and front-to-back
- Cabinets are plumb at the face
- Shims placed under cabinet sides and load points
- Cabinets sit flat with no rocking

CABINET ALIGNMENT & FASTENING

- Adjacent cabinets clamped before fastening
- Cabinets fastened together with correct screw length
- Cabinets secured to wall at stud locations
- Fasteners snug, not overtightened
- Shims remain tight after fastening

WALL & TALL CABINETS (IF APPLICABLE)

- Hanging rail installed level and properly supported
- Cabinets fully seated on rail
- Suspension hardware adjusted for plumb and height
- Cabinets drawn snug to wall without distortion
- Electrical boxes and wiring remain accessible

FILLERS, PANELS & TRIM

- Fillers cut to size and installed tight to walls
- Applied ends installed flush and secure
- Outside corners mitered cleanly
- Fasteners concealed where required

TOE KICK (BASE CABINETS)

- Cabinets fully leveled before toe kick installation
- Toe kick cut to length and dry-fit
- Toe kick height consistent across cabinet run
- Toe kick installed flush and secure

DOORS, DRAWERS & SHELVES

- ☐ Adjustable shelves reinstalled
- ☐ Drawers installed and adjusted first
- ☐ Doors installed and adjusted after drawers
- ☐ Consistent reveal achieved (3mm / 1/8")
- ☐ Doors align evenly top-to-bottom
- ☐ Hinge cover caps installed
- ☐ Bumper pads installed

FINAL REVIEW

- ☐ Cabinets secure and square
- ☐ Faces aligned and consistent
- ☐ No exposed shims or fasteners
- ☐ All reveals consistent
- ☐ Installation ready for countertops and finishes

Blum Tandem Plus Blumotion Undermount Drawer Slides Installation

Soft close, full extension guides sold in pairs, 8 screws per pair. Refer to [Blum Tandem Plus Blumotion Installation Guide](#) for precise details.

TOOLS NEEDED

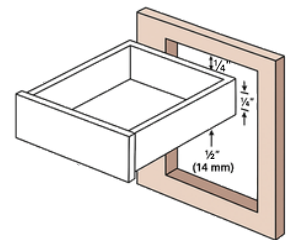
- Blum Tandem Plus Blumotion 563H/563 runners
- Blum locking devices (T51.1801 or T51.1901)
- Mounting screws (#6 wood or system screws Euro Screw 6.3mm x 13mm)
- Screwdriver or drill
- Measuring tape
- Pencil
- Level



Euro Screw 6.3mm x 13mm

STEP 1: PREPARE YOUR DRAWER AND CABINET

- Make sure your drawer box fits your cabinet opening correctly.
- Inside drawer width = Cabinet opening width minus 1-11/16" (42 mm)
- Leave 1/4" (6 mm) space at the top and 1/2" (14 mm) clearance underneath the drawer.



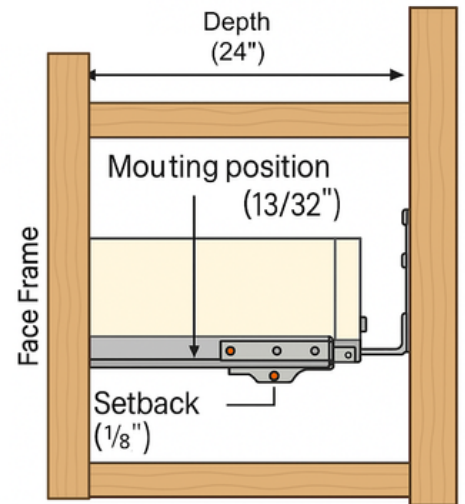
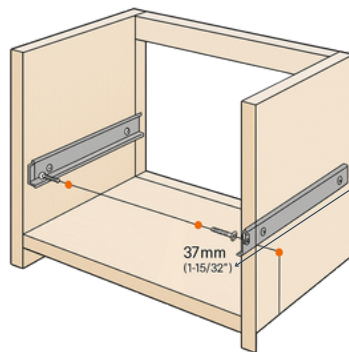
Pro Tip: Accurate measurements mean smoother movement later.

Need help calculating? Refer to our [Drawer Box Measuring Guide](#) for exact measuring instructions.

STEP 2: INSTALL THE RUNNERS

- Mark placement: Measure 1-½" (37 mm) up from the bottom inside of your cabinet. This is where the top of your runner will sit.
- Attach runners: Use at least two screws per runner (using the elongated holes). Keep them level on both sides.

Adjust if needed: Loosen screws and slide runners forward or backward slightly for perfect alignment, then tighten fully.

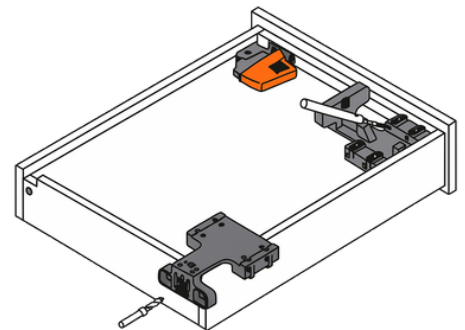


Note:
Image shown for 563H5330B (21") drawer slide length.
Specifications and dimensions are representative of
TANDEM plus BLUMOTION 563 series slides, available
in 12", 15", 18", and 21" lengths.

STEP 3: ATTACH THE LOCKING DEVICES

- Position the locking devices underneath the front of the drawer box.
- Secure them using the pre-drilled holes (if not pre-drilled, measure and drill pilot holes using a 2.5 mm bit).
- Each drawer needs a left and right locking device.

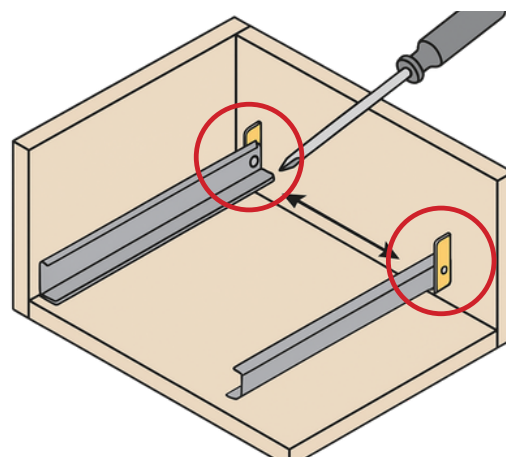
Optional: If using depth-adjustable locking devices (T51.1901), you can fine-tune how far the drawer front sits out from the cabinet later.



STEP 4: MOUNT REAR HOOKS (IF REQUIRED)

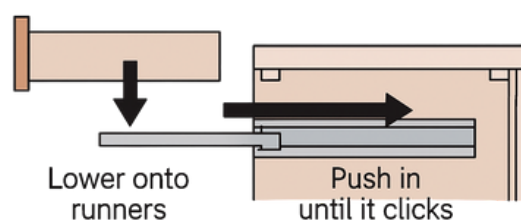
If your setup includes rear hooks or brackets (common for face-frame cabinets):

1. Attach them at the back of the cabinet to hold the runners securely.
2. Ensure both brackets are level and aligned with the runners.



STEP 5: INSERT THE DRAWER

- Extend the runners fully from the cabinet.
 - Set the drawer on top of the runners.
- Push the drawer closed until you hear a click — that means the locking devices have engaged automatically.



STEP 6. ADJUST THE DRAWER FOR PERFECT FIT

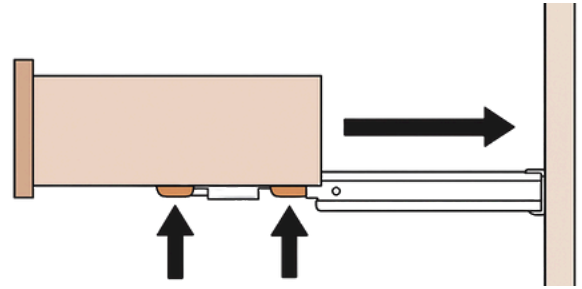
Once your drawer is in, you can make quick, tool-free adjustments using the orange tabs and levers on the Blum hardware:

Adjustment Type	How To Adjust	Range
Side-to-side	Rotate the orange dials under the front corners (both sides	$\pm 1/16"$ (1.5 mm)
Height	Push the orange tab up and back to raise the drawer front.	Up to $1/8"$ (3 mm)
Tilt (front/back)	Turn the lever at the rear of each runner to tilt the drawer	Up to $3/16"$ (5 mm)
Depth (optional)	Turn the screw on T51.1901 devices to move drawer front	Up to $3/32"$ (2.5 mm)

Tip: Adjust slowly and check drawer alignment after each tweak.

STEP 7. DRAWER REMOVAL (IF NEEDED)

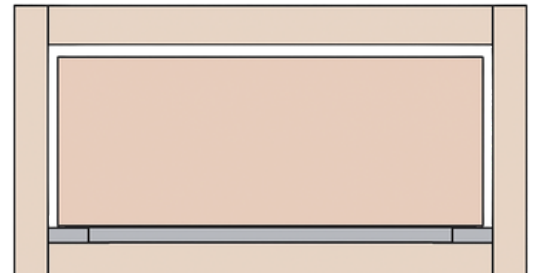
1. Fully open the drawer.
2. Squeeze both orange release levers underneath the drawer front.
3. Lift slightly and pull straight out.



To reinstall, just slide the drawer back in until it clicks.

STEP 8: FINAL CHECK

- Ensure the drawer slides smoothly and closes softly.
- Confirm all screws are tight and the drawer front is flush with the cabinet face.
- Make sure everything is leveled evenly.



THAT'S IT!

You've installed your Blum Tandem Plus Blumotion Drawer Slides — enjoy the smooth, quiet close!

Refer to [Blum Tandem Plus Blumotion Installation Guide](#) for precise details.

HAVE QUESTIONS? CONTACT US!

info@cabinetnow.com
1-855-669-5222



How To Install New Drawer Fronts

Refer to our [How to Install Drawer Fronts blog](#) for precise details.

TOOLS REQUIRED

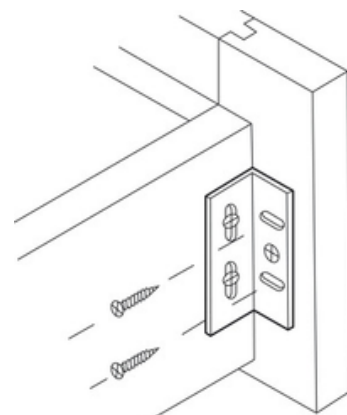
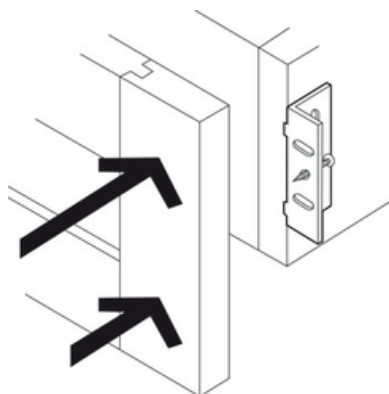
- Screwdriver
- Drill
- Level
- Measuring tape
- Two-sided foam tape or clamps

STEP 1: DRILL PILOT HOLES FOR SCREWS IN DRAWER BOX

Predrill screw holes from inside the drawer box along the outer edges of the drawer face. Use two screws per side for larger drawers.



Pro Tip: For shaker fronts with a flat center panel, angle pilot holes so screws hit the rail, not the panel. Alternatively, use Kolbe Korner's with their screws—these mount via brackets, so no holes are drilled from inside the drawer box.



STEP 2: POSITION THE DRAWER FRONT

- You have two ways to position drawer fronts before screwing:
- **Foam tape:** Apply double-sided foam tape to the drawer box face, align the drawer front carefully, and press firmly into place.
- **Clamps:** Clamp the drawer front flush to the drawer box on both sides so it won't shift.

Use a level to make sure the drawer fronts are even.



STEP 3: HAVE YOUR SPACER INTACT

Use at least a $\frac{1}{8}$ " **spacer** between drawer fronts and cabinet doors to allow proper clearance. Door bumpers or wood strips work well and are easy to remove. Repeat for all fronts, keeping them aligned with adjacent doors and drawers.



Pro Tip: Spacer size depends on your chosen overlay (standard is $\frac{1}{2}$ "). If you're unsure about spacing or overlay, check with your designer before installing.

STEP 4: SCREW THE DRAWER FRONT INTO PLACE

Carefully open the drawer box and drive the screw through the pilot hole from inside, pressing on the drawer front to keep it from shifting. Drill at an angle if needed to catch the rail of a shaker drawer front.



STEP 5: DOUBLE CHECK

When finished, the drawers should be level and spaced evenly with a consistent gap between them. Use your spacers to ensure they are evenly spaced and a level to ensure they are evenly aligned. If needed, you can adjust using a screwdriver to tweak anything off.



How To Install New Cabinet Doors

TOOLS REQUIRED

- Drill or screwdriver
- Phillips head bit
- Tape measure
- Pencil
- Level
- Masking tape (optional)
- Drop cloth or blanket (to protect doors)

STEP 1: REMOVE OLD DOORS

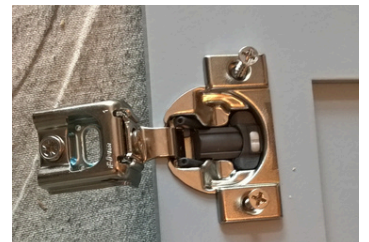
Support the door while removing hinges to avoid damaging the cabinet frame. Remove bottom hinge screws first, then the top. If reusing hardware, keep hinges and screws labeled and together.

STEP 2: MEASURE BEFORE INSTALLING

Confirm door sizes before hanging. Measure each door individually and double-check overlay and spacing, especially where doors meet.

STEP 3: INSTALL HINGES

Attach hinges to the door first, following manufacturer spacing guidelines. Use pilot holes to prevent splitting and ensure screws go in straight.



STEP 4: HANG THE DOORS, ADJUST & ALIGN

Hold the door in position (or use a support block) and secure hinges to the cabinet frame. Use a level to check alignment before fully tightening screws. Adjust hinges as needed for even gaps and smooth opening and closing. Tighten all screws once doors are properly aligned.

How To Get Started Measuring For Your Kitchen Design

STEP 1: WATCH OUR VIDEO HOW TO MEASURE YOUR KITCHEN BEFORE YOU START.



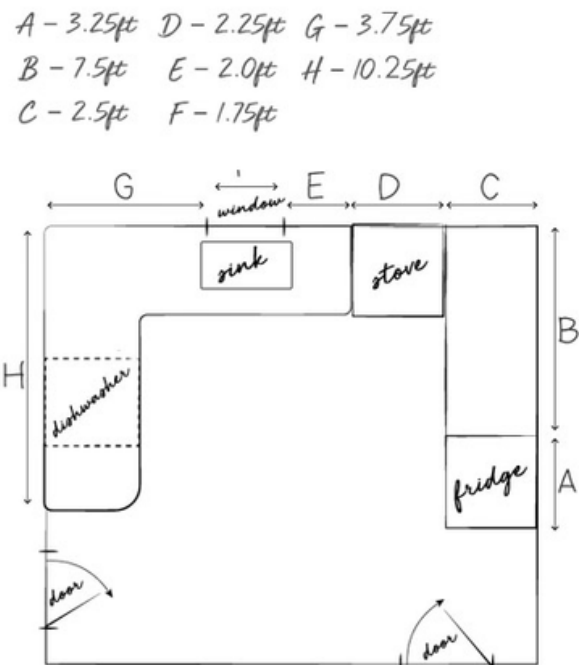
STEP 2: DOWNLOAD THE PRINTABLE KITCHEN MEASURING GUIDE.

STEP 3: SKETCH THE OUTLINE

STEP 3: SKETCH THE BASIC OUTLINE OF YOUR KITCHEN

STEP 4: FILL IT IN

Now draw in any doorways, windows, or other features that will dictate where you can install your cabinets. Mark everything clearly and create labels for each measurement of where cabinets will be installed. (see example on this page).



STEP 5: MEASURE

Finally break out your tape measure and record measurements for all of the openings you labeled in the step above. Measure from outside edge to outside edge. If need be round up to the nearest inch. Remember this is just to get started with your design, and we can get exact measurements as we progress.

STEP 6: ADD YOUR APPLIANCES

You should have an idea for where your appliances will be; for example: sink, dishwasher, refrigerator, or any other appliances. Make sure to includes this in your drawing, with the measurements of them.

STEP 7: SNAP SOME PICS!

Send them to us along with your sketches and notes in one of these ways:

- Fill out [this form](#). Don't forget to upload your sketch, your measurements, and your photos.
- Email your design to info@cabinetnow.com. Put "My Kitchen Design" or something similar in the subject line.

How to Measure for Cabinet Doors

REQUIRED TOOLS

- Note Pad
- Pencil
- Tape Measure

MEASURING

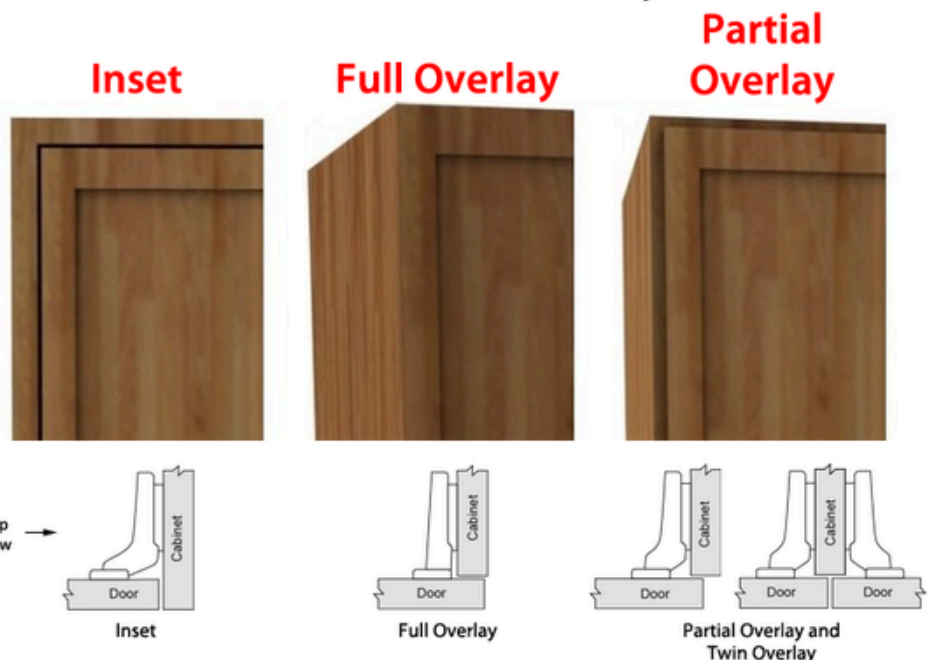
- Measure each door opening to the nearest **1/16"** and record it as width × height (e.g., 14" × 30")
- Ensure at least **1/8" clearance** on all sides.
- When measuring, make sure that there is at least **1/8"** clearance around all openings.
- Since doors are custom and non-returnable, double-check all measurements before ordering.

Note: These instructions are helpful if you are installing popular concealed hinge cabinet doors. If you choose a different type of hinge, your measuring instructions may differ.

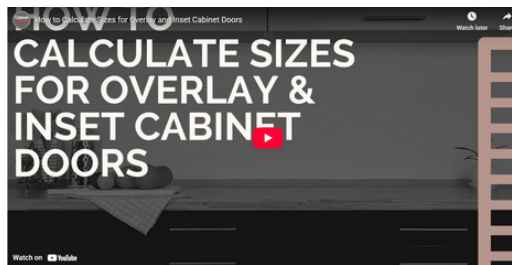
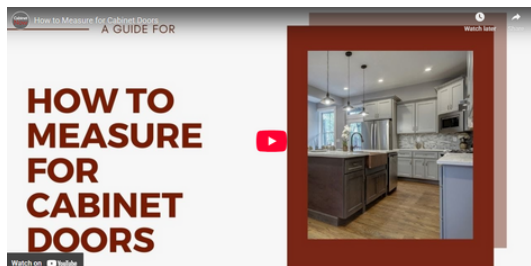
PLACING YOUR ORDER

Cabinet Door Overlays

- **Single doors:** add **1" to width and height** (e.g., 14" × 30" → 15" × 31") for a **1/2" overlay**.
- **Split doors:** add **1" to height**. For each door width: (width 1") ÷ 2 – 1/16" (gives a **1/8" gap**). Order two doors for openings over **24" wide**.
- If your overlay isn't 1", use your overlay amount instead



INSTRUCTIONAL VIDEOS (CLICK TO VIEW)



PRINTABLE DOOR MEASURING GUIDE

SINGLE DOOR



The overlay is the distance that door goes past the opening. The door's width and height will be the width or height of your opening plus twice the overlay.

$$\text{width/height} = \text{opening} + (\text{overlay} \times 2)$$

example

If your opening is 10" w x 20" h and you want a door with a 1/2" overlay (on all four sides) you need to order a door that's 11" w x 21" h.

$$W: 10" + (0.5" \times 2) = 11" w$$

$$H: 20" + (0.5" \times 2) = 21" h$$

Single door cabinets should be no wider than 25".

SPLIT DOORS



For split doors, 2 doors on 1 opening, the overlay is only on the edges facing the frame. The doors are separated by the center reveal which is 0.125". To calculate your door width take the opening plus twice the overlay, subtract .125" (for the reveal), and divide by 2. The height is the same as with a single door.

$$\begin{aligned}\text{width} &= (\text{opening} + (\text{overlay} \times 2) - 0.125) / 2 \\ \text{height} &= \text{opening} + (\text{overlay} \times 2)\end{aligned}$$

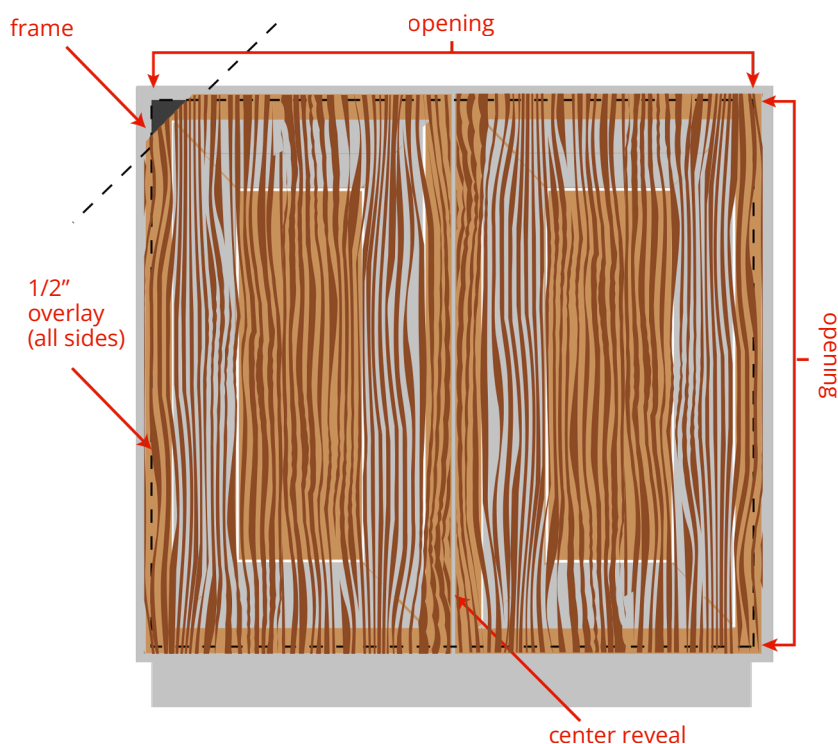
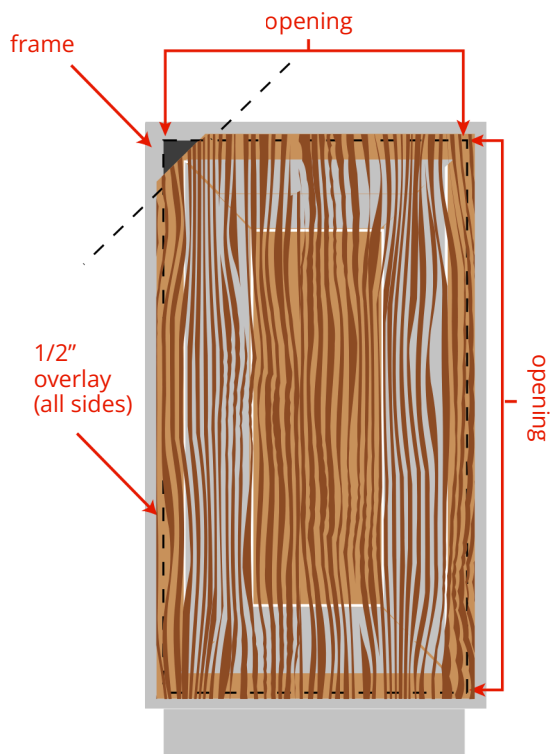
example

If your opening is 40" w x 20" h, doors with a 1/2" overlay will need to be 20.4375" w x 21" h

$$W: (40 + (0.5 \times 2) - .125) / 2 = 20.4375" w$$

$$H: 20 + (0.5 \times 2) = 21" h$$

Remember to order 2 doors when you're ordering for a split door cabinet!





<https://cabinetnow.com>

1-855-669-5222

info@cabinetnow.com

Email us your measurements and we'll put together a custom quote for you!

[illegible]

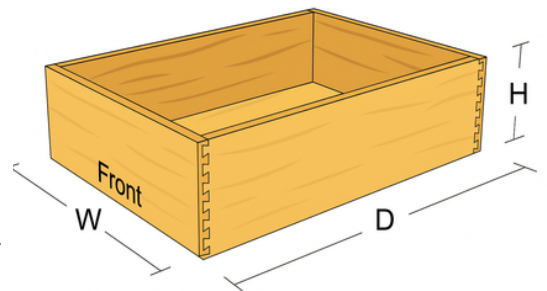
Cabinet Drawer Box Measuring Guide

REQUIRED TOOLS

- Note Pad
- Pencil
- Tape Measure

STEP-BY-STEP MEASURING

1. Measure your cabinet box opening to the nearest **1/16"**.
2. Record your measurements carefully on your note pad. Be sure to record your measurements as width x height. Ex. width 14" x 30" height.
3. Subtract slide specifications for accurate drawer sizing:
 - Width = cabinet opening width – specifications for drawer slides
 - Height = cabinet opening height – specifications for drawer slides
 - Depth = cabinet opening depth – recommendation of hardware specification for distance adjustment



Example:
Cabinet Opening Width = 15"
Drawer Side Thickness = 1/2"
Deduct 5/8" total (for slides)
Drawer Box Width = 14 3/8"

4. Account for Drawer Glide Clearance

To find your final drawer box size, subtract the required clearance based on your drawer slide specifications. Clearance varies by brand and model.

- Using outside hardware: follow the manufacturer's clearance guidelines.
- Using CabinetNow slides: refer to the Drawer Glide Compatibility Chart (page 2) for correct values.

💡 Note: The chart applies only to CabinetNow hardware, including *Blum Tandem with Blumotion, Salice Futura Undermount, and Salice Side-Mount slides.

Made in the USA | Crafted to **1/16"** Precision | cabinetnow.com



Drawer Glide Compatibility Chart

Product Name	How to Size Drawer Box			
	Width	Height	Depth	Notch Required
Blum Tandem plus Blumotion	- 5/8	- 13/16	Same as Drawer Box Depth	1 3/8
Blum Tandem plus Blumotion	- 5/8	- 13/16	Same as Drawer Box Depth	1 3/8
Blum Tandem plus Blumotion	- 5/8	- 13/16	Same as Drawer Box Depth	1 3/8
Blum Tandem plus Blumotion	- 5/8	- 13/16	Same as Drawer Box Depth	1 3/8
Salice Side Mount Drawer Guide	-1	- 11/16	-1	None
Salice Side Mount Drawer Guide	-1	- 11/16	-1	None
Salice Side Mount Drawer Guide	-1	- 11/16	-1	None
Salice Side Mount Drawer Guide	-1	- 11/16	-1	None
Salice Side Mount Drawer Guide	-1	- 11/16	-1	None
Salice Side Mount Drawer Guide	-1	- 11/16	-1	None
Salice Side Mount Drawer Guide	-1	- 11/16	-1	None
Salice Futura Undermount	- 5/8	-1	Same as Drawer Box Depth	1 3/8
Salice Futura Undermount	- 5/8	-1	Same as Drawer Box Depth	1 3/8
Salice Futura Undermount	- 5/8	-1	Same as Drawer Box Depth	1 3/8
Salice Futura Undermount	- 5/8	-1	Same as Drawer Box Depth	1 3/8
Salice Futura Undermount	- 5/8	-1	Same as Drawer Box Depth	1 3/8

Ready to Order? Fill out this order form and submit to info@cabinetnow.com.

Important: Enter the final drawer box dimensions you want us to build. Do not list cabinet openings.

Need help determining your drawer box sizes? Contact our team at info@cabinetnow.com

[illegible]

Custom Cabinets for Every Space and Style



Made in the USA



6-10 day lead times



A+ BBB Rating

CabinetNow



cabinetnow.com

1-855-669-5222

info@cabinetnow.com

