

# YOUR 3D DESIGN

Say hello to your new IKEA kitchen! This 3D rendering will give you a clear view of how your kitchen will look.

This design shows details such as appliances, walls, backsplash, cabinet colors and more.



Note: This drawing is an artistic interpretation of the general appearance of the design. It is not meant to be an exact rendition.

Designed: 15/08/2017  
Printed: 15/08/2017



Note: This drawing is an artistic interpretation of the general appearance of the design. It is not meant to be an exact rendition.

Designed: 15/08/2017  
 Printed: 15/08/2017



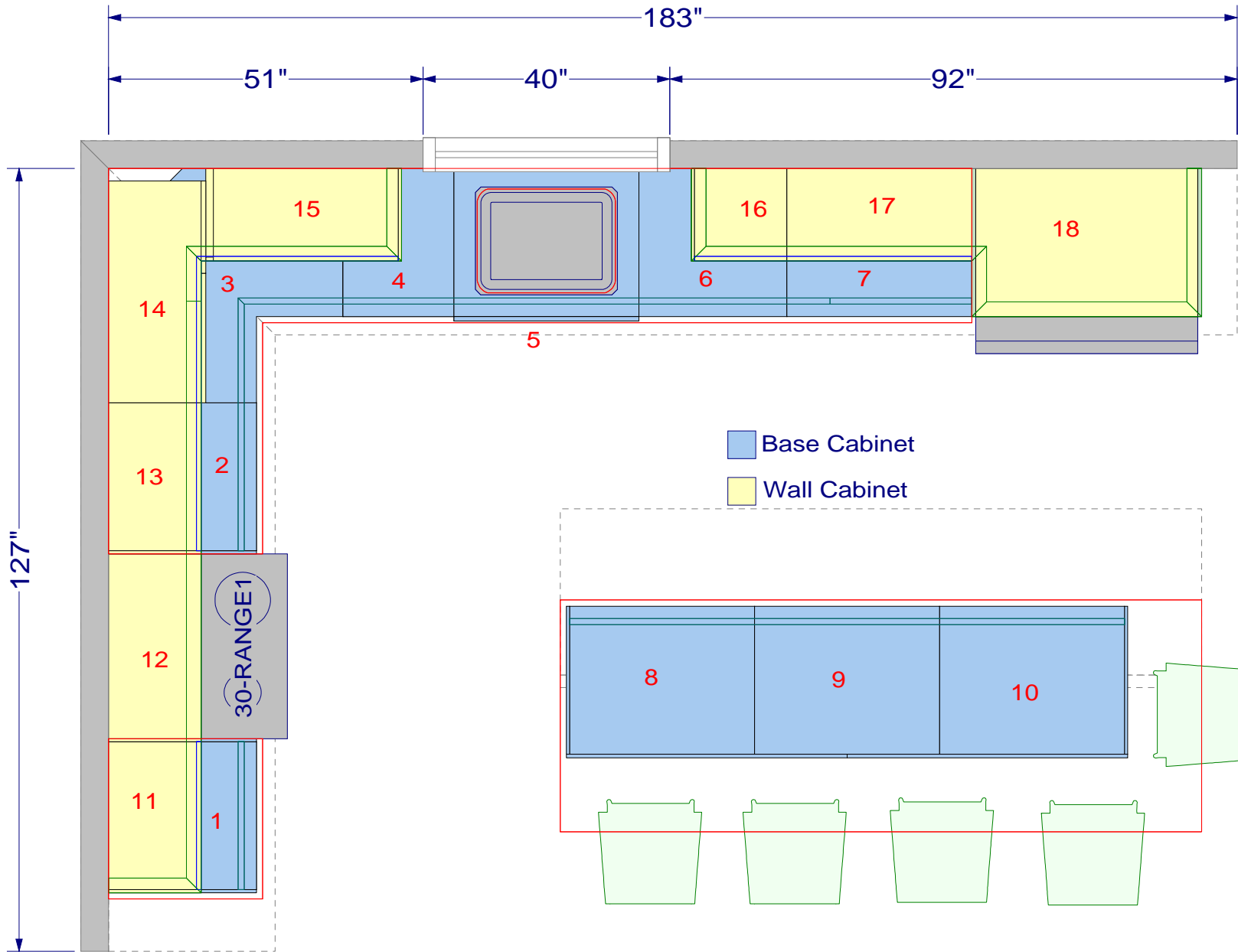
Note: This drawing is an artistic interpretation of the general appearance of the design. It is not meant to be an exact rendition.

Designed: 15/08/2017  
Printed: 15/08/2017

# 1. Numbered Floor Plan

Each cabinet on the floor plan has a designated number that matches the number on the IKEA Home Planner item list.

It's easy to identify the type and location of each cabinet this way.



Use this design as reference for your contractor or installer. Do not use IKEA's Home planner file for installation purposes.

Changes related to incomplete or inaccurate provided measurements are a responsibility of the homeowner.

## 2. YOUR FLOOR PLAN

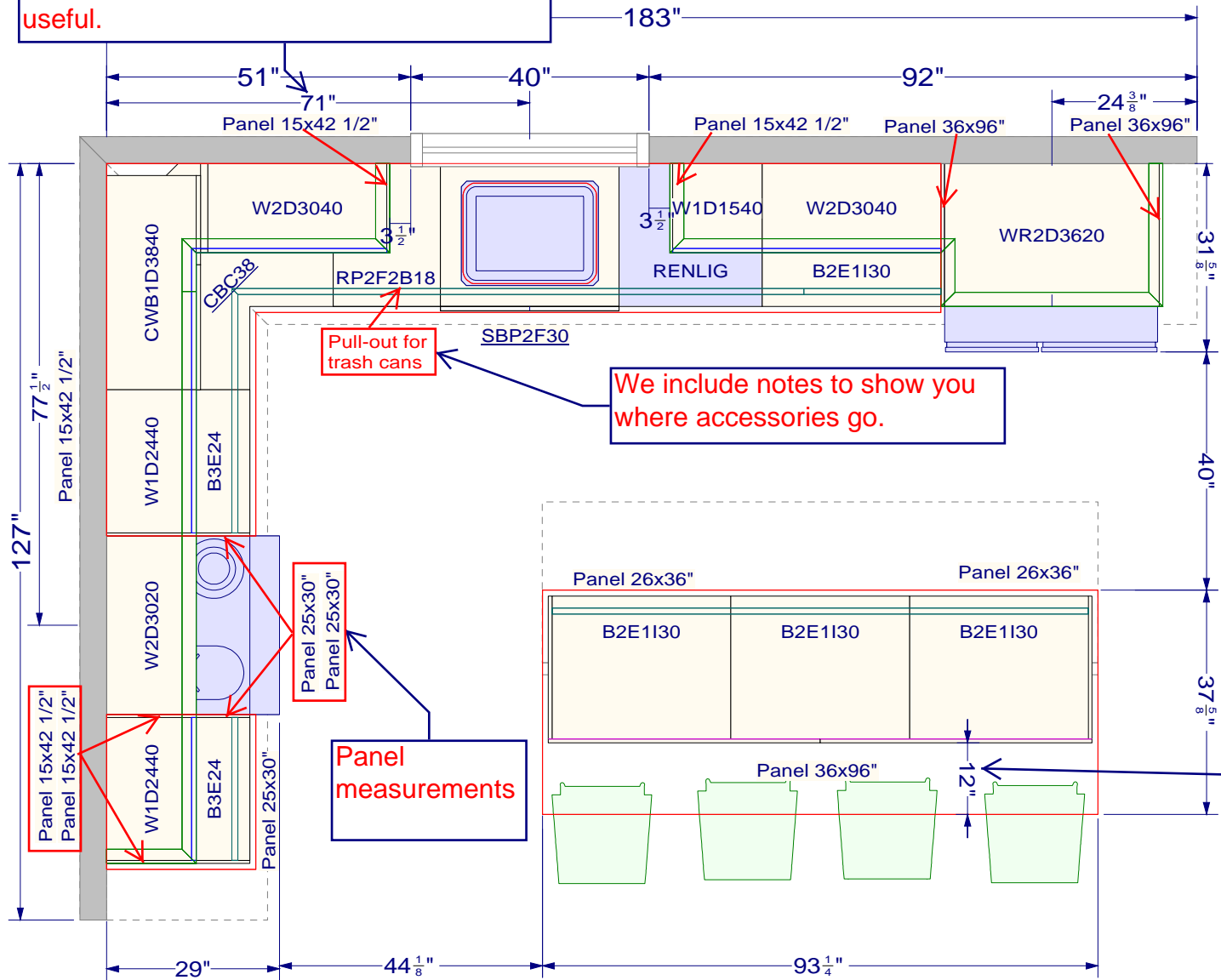
This is a schematic drawing of your kitchen as seen from above.

Here you'll see the overall layout for the space.

Note: walls, doors, windows and walkways are included.

Distance from the corner to the center of the sink. Your contractor will find this useful.

These are notes that include technical information about your design, such as: drawer types, ceiling height, appliance measurements, selected handles, door style, etc.



- Door Style: BODBYN off-white
- Cabinet Frame Finish: White
- Handles:
  - +FÄGLAVIK Knob, black (for doors)
  - +FÄGLAVIK Handle, black (for drawers)
- Drawers: Maximera
- Ceiling Height: 96"
- Wall Cabinet alignment: 94 1/2"
- Appliance:
  - +RENLIG Built-in dishwasher with 2 fronts, Bodbyn off-white (190.990.44)

Pull-out for trash cans

We include notes to show you where accessories go.

Panel measurements

Countertop overhang: this is the depth of your seating area at the island

Use this design as reference for your contractor or installer. Do not use IKEA's Home planner file for installation purposes.

Changes related to incomplete or inaccurate provided measurements are a responsibility of the homeowner.

sample design..

# 3. YOUR ELEVATION DRAWINGS

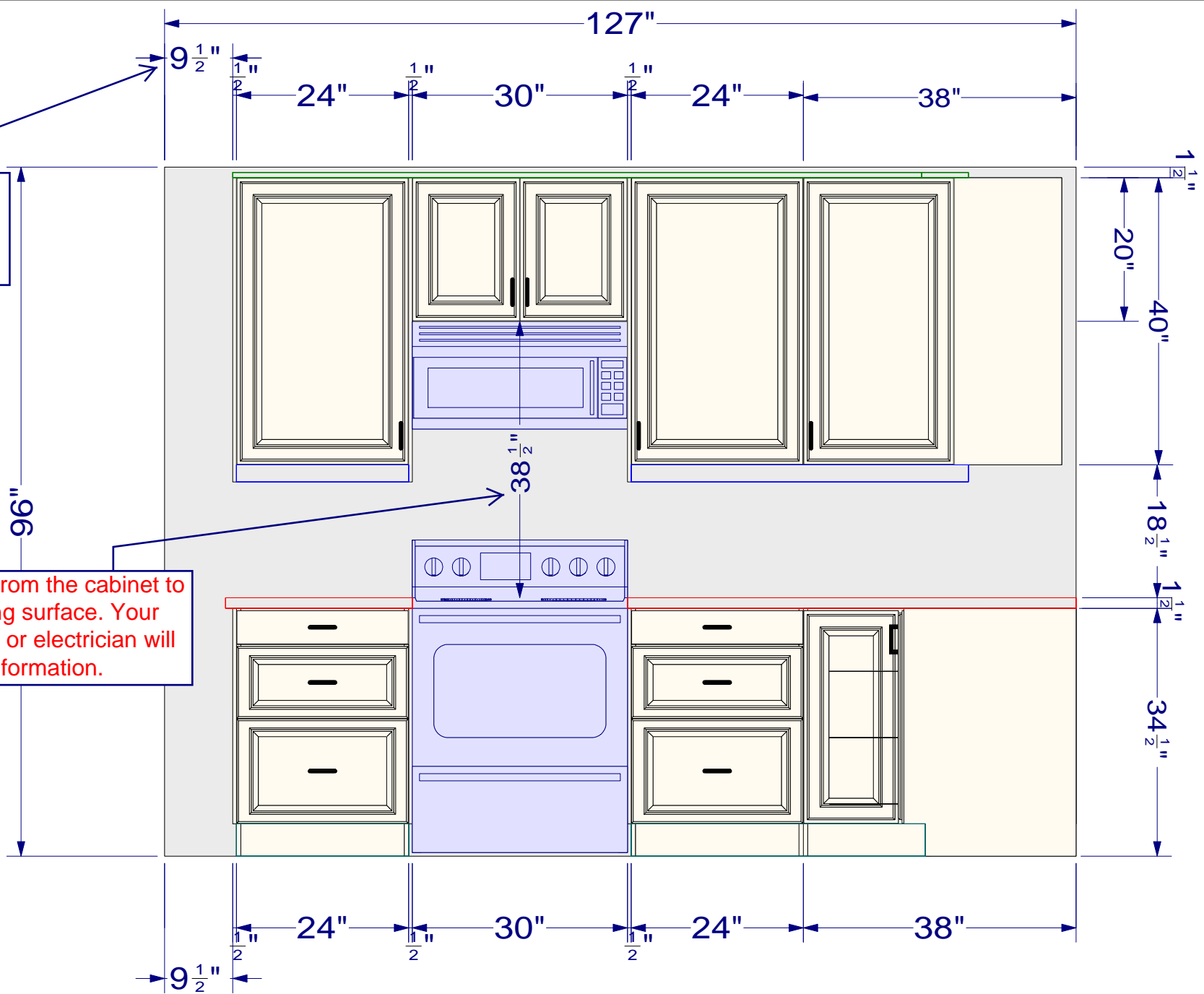
These are vertical views of each of your kitchen walls. They're the easiest and most detailed way to know the specifics for each cabinet along each wall.

They allow you to review measurements, appliance locations and cabinet distribution.

Use this for technical or installation information and planning

Space left after or before your cabinets

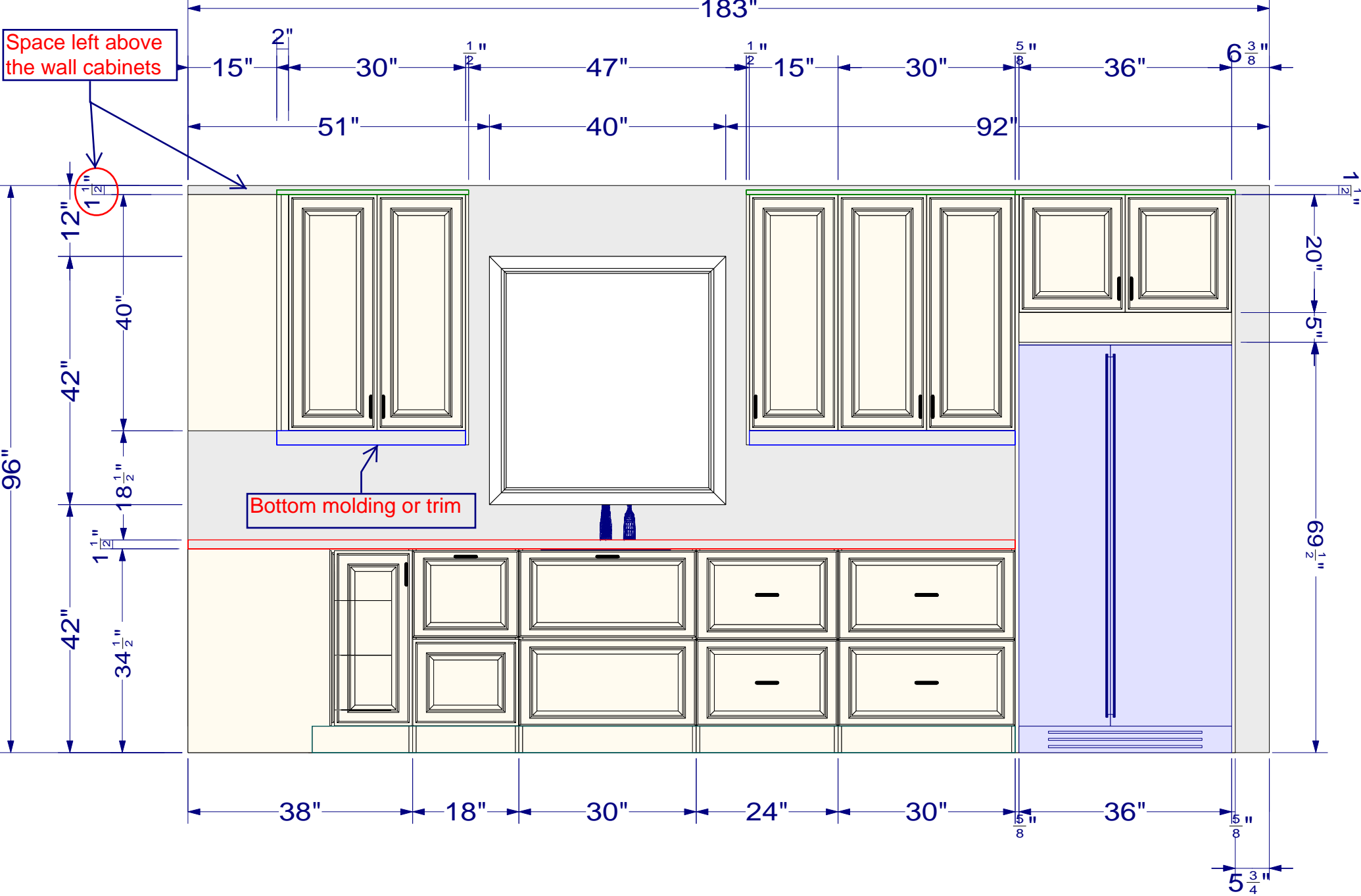
Distance from the cabinet to the cooking surface. Your contractor or electrician will use this information.



Use this design as reference for your contractor or installer. Do not use IKEA's Home planner file for installation purposes.

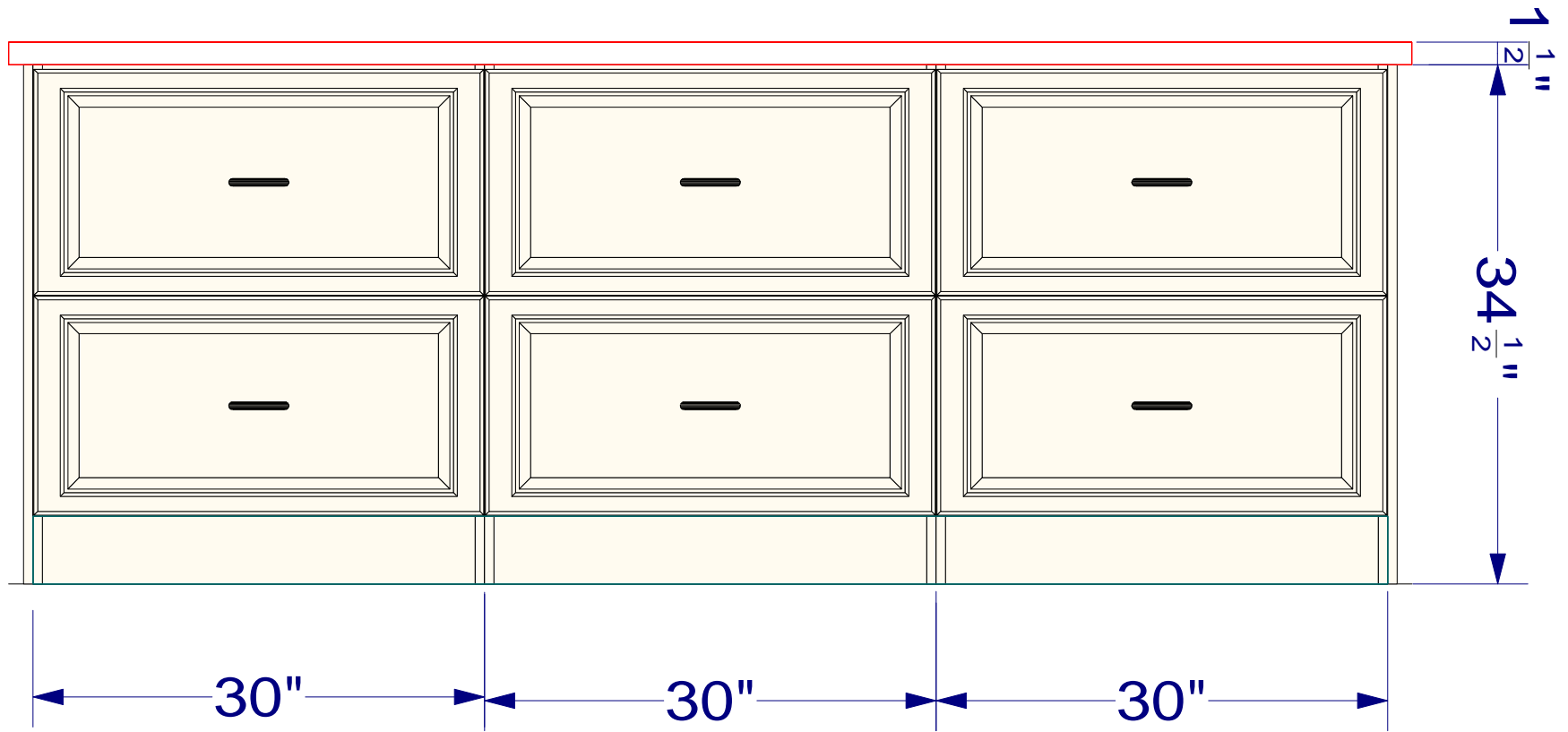
Changes related to incomplete or inaccurate provided measurements are a responsibility of the homeowner.

Space left above the wall cabinets



Use this design as reference for your contractor or installer. Do not use IKEA's Home planner file for installation purposes.

Changes related to incomplete or inaccurate provided measurements are a responsibility of the homeowner.



Use this design as reference for your contractor or installer. Do not use IKEA's Home planner file for installation purposes.

Changes related to incomplete or inaccurate provided measurements are a responsibility of the homeowner.

# REMINDERS BEFORE BUYING YOUR IKEA KITCHEN

- Always re-measure your walls before buying your cabinets.
- The design saved in your Home Planner account will look slightly different than the one we provided you.
- Custom cabinets can't be shown on the IKEA Home Planner.
- IKEA discontinues cabinet sizes or styles without any notice. If this happens, please let us know so we can adjust your design.

# 4. IKEA HOME PLANNER ITEM LIST

This item list has been created with IKEA Home planner to make your purchase process easier.

Use it to complete your kitchen purchase at your local IKEA store along with our “Extra items list”.

It’s been prepared specifically for your design.

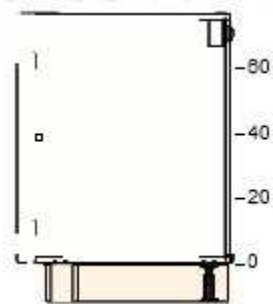
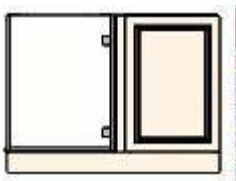


**Project name**  
1914-Rev2-Hirschy-06JUL17  
**Project number**  
0001-0165-1576

**Total Price:**  
**\$5726.96**

1

**Price    Quantity    Total Price**



50265502 SEKTION  
base corner  
cabinet  
frame  
white  
47x26x30 "

\$81

1

\$81



20266334 BODBYN  
door  
off-white  
21x30 "

\$85

1

\$85



10265622 UTRUSTA  
shelf for  
corner base  
cabinet  
white  
47 "

\$13

1

\$13

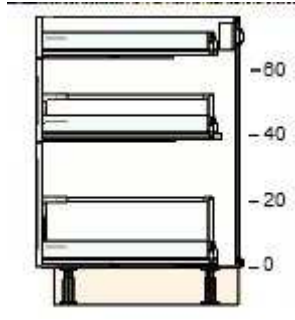
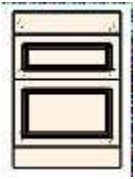


60204645 UTRUSTA  
hinge  
125 °

\$6

1

\$6



90265388 SEKTION  
base  
cabinet  
frame  
white  
24x24x30 "

\$46

1

\$46



80266350 BODBYN  
drawer  
front  
off-white  
24x5 "

\$31

1

\$31



20266348 BODBYN  
drawer  
front  
off-white  
24x10 "

\$39

1

\$39



00266349 BODBYN  
drawer  
front  
off-white  
24x15 "

\$50

1

\$50



10265679 MAXIMERA  
drawer,  
high  
white  
24x24 "

\$47

1

\$47



70265662 MAXIMERA  
drawer, low  
white  
24x24 "

\$37

1

\$37



80265666 MAXIMERA  
drawer,  
medium  
white  
24x24 "

\$44

1

\$44



40287590	FÖRBÄTTRA toekick off-white 84x4 1/2 "	\$19	9	\$171
----------	---	------	---	-------



10265518	SEKTION leg 4 1/2 "	\$6	9	\$54
----------	------------------------	-----	---	------

---

**COVER PANELS & FILLER PIECES**

80266411	FÖRBÄTTRA cover panel off-white 25x30 "	\$38	1	\$38
----------	--	------	---	------



90266415	FÖRBÄTTRA cover panel off-white 36x96 "	\$159	1	\$159
----------	--	-------	---	-------

---

**KNOBS, HANDLES & DOOR DAMPERS**

40241823	UTRUSTA door damper for hinge 110-125 °	\$6	11	\$66
----------	--	-----	----	------

---

**Total Price:**  
**\$5726.96**

# 5. EXTRA ITEMS LIST

These items are on a separate list for either of these two reasons:

1. IKEA Home Planner didn't include them in your design.
2. They're components for customized cabinets, panels or fillers.

**These items are NOT optional.**

When purchasing your kitchen use this list along with the one generated by IKEA Home Planner.

Additional IKEA products that you NEED to add to your order

**Extra items to complete your design**

Product Number	Description	Qty	Price	Total
902.664.15	FÖRBÄTTRA Cover panel, off-white 36x96" (These panels need to be used at the island exposed sides)	2	\$159.00	\$318.00
902.664.15	FÖRBÄTTRA Cover panel, off-white 36x96" (This item will need to be cut to size and used as trim to close the gap between upper cabinets and ceiling)	1	\$159.00	\$159.00
102.655.18	SEKTION leg 4 1/2"	5	\$6.00	\$30.00
002.984.11	SEKTION assembly kit for kitchen island 46 1/2"	5	\$15.00	\$75.00
002.984.06	SEKTION Support bracket for kitchen island 15 3/4"	7	\$14.99	\$104.93
				\$686.93

This is where we specify the panels used to finish the cabinet exposed sides.

**These panels will be used at the exposed sides of kitchen cabinets**

Product Number	Description	Qty	Price	Total
802.664.11	FÖRBÄTTRA Cover panel, off-white 25x30"	6	\$38.00	\$228.00
402.664.08	FÖRBÄTTRA Cover panel, off-white 15x42 1/2"	4	\$37.00	\$148.00
202.664.14	FÖRBÄTTRA Cover panel, off-white 25x90"	2	\$119.00	\$238.00
				\$614.00

This is where we specify the cabinets that need to be cut in order to make the fillers needed for your design

**This panel needs to be cut for fillers between kitchen cabinets**

Product Number	Description	Qty	Price	Total
802.664.11	FÖRBÄTTRA Cover panel, off-white 25x30"	1	\$38.00	\$38.00
				\$38.00

Price total for "Extra Items" only

Total for IKEA Home Planner items

Extra Items:	\$1,338.93
IKEA Total Price:	\$5,726.96
<b>IKEA Total Price + Extra Items:</b>	<b>\$7,065.89</b>

This is where we specify the pieces needed to finish the cabinets with trim and molding

### Molding & Trim

Product Number	Description	Qty	Price	Total
702.069.60	FÖRBÄTTRA Rounded deco strip, off-white 87"	4	\$29.00	\$116.00
				\$116.00

Spare parts. We add these just in case. If your installer or contractor makes a mistake, you won't need to go to IKEA for a single panel or cabinet leg, for example.

### Extras

Product Number	Description	Qty	Price	Total
102.655.18	SEKTION leg 4 1/2"	1	\$6.00	\$6.00
602.046.45	UTRUSTA Hinge 125° / 2 pack	1	\$6.00	\$6.00
402.418.23	UTRUSTA Door damper for hinge 110-125° / 2 pack	1	\$6.00	\$6.00
602.615.27	SEKTION suspension rail galvanized 84"	1	\$13.00	\$13.00
802.664.11	FÖRBÄTTRA Cover panel, off-white 25x30"	1	\$38.00	\$38.00
402.664.08	FÖRBÄTTRA Cover panel, off-white 15x42 1/2"	1	\$37.00	\$37.00
202.664.14	FÖRBÄTTRA Cover panel, off-white 25x90"	1	\$119.00	\$119.00
702.069.60	FÖRBÄTTRA Rounded deco strip, off-white 87"	1	\$29.00	\$29.00
402.875.90	FÖRBÄTTRA Toekick, off-white 84x4 1/2"	1	\$19.00	\$19.00
				\$273.00

Molding & Trim + Extras	\$389.00
IKEA Total Price + Extra Items:	\$7,065.89
IKEA Total Price + Extra Items + Molding & Trim + Extras:	\$7,454.89

Combined grand total before taxes